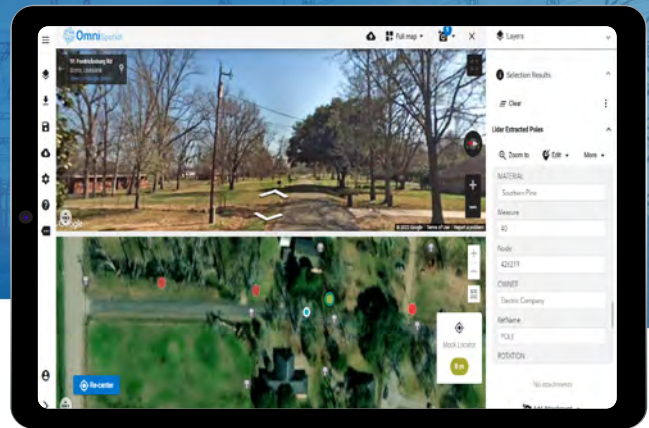


INNOVATIVE MAPPING FOR ASSET MANAGEMENT AND MAINTENANCE WORKFLOWS FOR UTILITIES



OmniSpatial natively integrates with Esri ArcGIS Enterprise while providing a framework to integrate and fully leverage investments in other spatial data products.



Data Integration

OmniSpatial consumes Esri map and feature services for data viewing and updates in addition to importing GeoJSON, Google KML, and other GIS data formats. Integrated sources such as weather, environmentally sensitive areas, and crew locations support real time operational and situational awareness out in the field.

SAP Integration

OmniSpatial's map interface can be integrated with SAP Asset Manager to provide a more robust and unified mapping experience. Correcting asset locations based on field inspections (red-lining), getting directions to assets, and generating notifications on assets are just a few of the features available to users.

Offline Capable

OmniSpatial is a progressive web application that loads into modern web browsers and runs without online access. Data can be cached to mobile devices for field use, and newly collected or updated data will sync to the source system once the device is online.

Crew Specific Data and Configurations

OmniSpatial is configurable for any number of field or office uses based on the authenticated user's role in the organization. Role based maps, data, and user interfaces provide an initial, consistent user environment. Users can also adjust and save personal configurations based on individual preferences.

Key Features and Functionalities



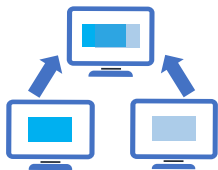
Collect and correct (red-line) asset locations based on GPS coordinates or other location sources



Deploy OmniSpatial on devices running a modern web browser



Capture photos, video, audio and notes to augment asset attributes



Open multiple panels to see different views and formats of data



Route from current location to specific asset or work order locations



Synchronize data back to source systems for quality verifications and updates

rizing.com | geospatial@rizing.com

