

UNLOCK THE TRUE POWER OF GEOSPATIAL INTEGRATION FOR ASSET MANAGEMENT



A software solution that integrates SAP and enterprise Geographic Information Systems (GIS) by providing bi-directional synchronization in a trusted and cost-effective way

Features



Establish System of Record

Locate asset data sources of truth to reinforce asset information, business processes, and data governance

Know with confidence that internal and regulatory reports are accurate



Synchronize Asset Data

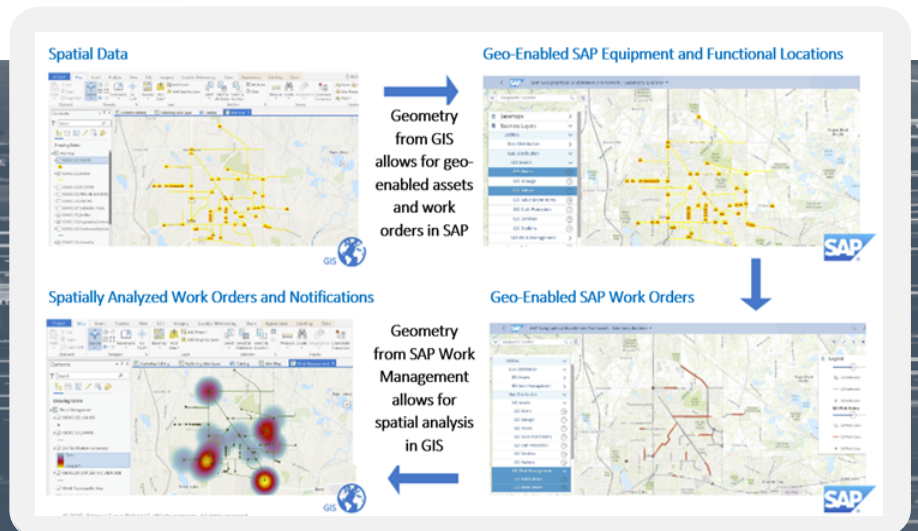
Synchronize SAP EAM and GIS assets and establish one aligned system of record

Eliminate data discrepancies and dual asset maintenance in multiple applications and systems






Enable Critical Spatial Functionality and Analytics

Allow for geo-enabled work orders, equipment, and functional locations for SAP EAM capability locations, equipment, and linear asset management objects with GIS features for spatial analysis and material traceability

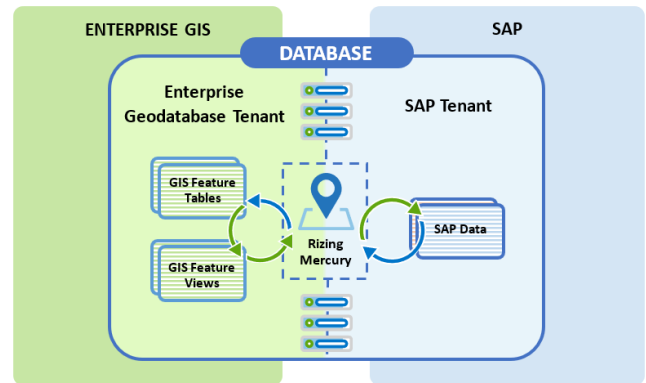






Benefits

 Lower Costs	 Reduce Risk	 Increase Productivity
Eliminate manual asset maintenance across multiple systems	Mitigate asset risks and environmental hazards by marrying asset health and environmental factors	Improve maintenance planning and scheduling for geospatially dispersed assets
Shorten SAP-GIS integration projects	Create traceable, verifiable, and complete asset records	Leverage spatial analysis to identify field work trends
Reduce IT Footprint by removing legacy data consolidation	Improve data integrity, safety, and compliance reporting by ensuring accurate and accessible critical asset information	Deliver asset spatial and attribute information from SAP

Mercury Architecture

- Leverages Rizing's extensive SAP and Esri experience and expertise in the industries that we serve
- Runs on SAP ECC or S/4HANA platforms with no need for middleware
- Provides optimized performance when both SAP and Esri environments utilize HANA



 Vegetation Management	 Pole Replacement /Inspection	 Material Traceability	 Water
Efficiently maintain difficult-to-capture and dynamic assets, such as trees	Leverage Mercury to synchronize SAP and GIS for strategic pole maintenance planning and route optimization	Achieve traceable, verifiable, and complete data with tight integration between GIS and SAP	New construction requires updated features in GIS and equipment in SAP
Represent tree assets and vegetation spans alongside other utility asset hierarchies for optimized maintenance	Upkeep accurate data across geospatial and work management systems, including pole locations and pole-mounted equipment	Processes from receipt of material in SAP through GIS as built are supported with single data entry points throughout	Manage the creation of new features and equipment with one point of entry while Mercury synchronizes required data in GIS and SAP systems

SAP® Certified
Integration with SAP S/4HANA®

rizing.com | products@rizing.com

